

CAFE



4

This Kitchen Looks
Great on You

8

Kitchen Inspiration

22

Product Details

32

For the Trade

42

Selection &
Customization Guides



It's time appliances had a personality. *Young.*

Growing trends call for a forward-thinking approach to appliances. That's why Café offers a collection of modern kitchen appliance finishes that create a canvas to convey your unique style: Matte White, Matte Black, Stainless Steel, or Platinum Glass. Our distinct line of customizable hardware options can complete your look with accents that truly distinguish your kitchen aesthetic.

This kitchen looks great on *you*.



MCKENNA BLEU
@mckennableu

Inspired by what looks best
on you—now, in your kitchen.

What if your kitchen was as personal as your wardrobe? This season, Café is turning style inward—reimagining kitchen design through the lens of you. Inspired by the fashion world’s seasonal color theory, we’ve partnered with global leaders at House of Colour to bring expert-backed palettes and personalization into the heart of the home. Because this kitchen isn’t just beautiful. **It looks great on you.**

“Café empowers people to
bring that same confidence
from their wardrobe into
their kitchen—by choosing
colors and finishes that truly
reflect their best selves.”



MEGHAN TINKER

Image Consultant & Stylist, Owner
House of Colour – Louisville, Kentucky



Spring Plaza

Bright tones, playful patterns,
and a fresh take on refrigeration
beyond the kitchen.



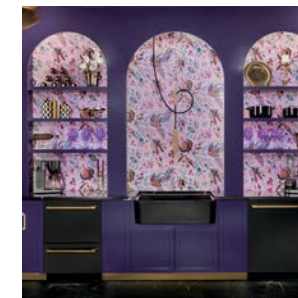
Summer Romance

Soft curves, airy materials,
and serene hues inspired
by Art Nouveau.



Autumn Boheme

Earthy textures, rich tones,
and a grounded warmth
that feels timeless.



Winter Gala Pantry

Bold contrast, luxe finishes,
and a moody palette made
for the modern host.

Unparalleled Choice

CUSTOMIZABLE PROFESSIONAL COLLECTION

Express Your Style

Interchangeable knob and handle kits pair with bold appliance finishes for a look that’s *uniquely yours*.

PREMIUM FINISHES



Matte Black



Stainless Steel



Matte White

CUSTOMIZABLE HARDWARE



Brushed Stainless



Brushed Bronze



Brushed Black



Brushed Copper



Flat Black



Brushed Brass



PLATINUM GLASS COLLECTION

Modern Appeal

A reflective glass finish and angular, modern lines pair together for a contemporary look you won’t find anywhere else.

Platinum Glass



THE Summer Romance KITCHEN

*Featured in
Matte White with
Brushed Brass Hardware*

Light, airy, and effortlessly romantic, this kitchen feels like a love letter to summer. Matte White appliances with brushed accents and delicate touches complete the look, creating a space that's both dreamy and deeply personal.



designed by
TK Wismer
Creative Director, Café

48" Smart Dual-Fuel
Commercial-Style Range
with 6 Burners and Griddle

Available in Natural Gas
C2Y486P4TW2

Upgrade to Bronze Hardware
CXPR8HKPTBZ

ENERGY STAR® 18.6 Cu. Ft.
Counter-Depth
French-Door Refrigerator
CWE19SP4NW2

Upgrade to Brass Hardware
CXQB4H4PNCG

Custom Speed Cook Oven
with Advantium® Technology
CSB913P4VW2

Professional Series
30" Smart Built-In
Convection Single Wall Oven
CTS90DP4NW2

Upgrade to Brass Hardware
CXWS0H0PMCg

**CLICK TO
SHOP
THE LOOK**

THE Vibrant Vibes KITCHEN

*Featured in
Matte White with
Brushed Brass Hardware*

Café invites you to explore the creative possibilities of customization, bringing high-end design details within reach. From contrasting color pairings to interior cabinet accents and bold toe kicks, every element of this kitchen is thoughtfully designed to deliver a unique and elevated take on personal style.

ENERGY STAR®
Smart Single Drawer
Dishwasher
CDD220P4WW2

**36" Smart Dual-Fuel
Commercial-Style Range**

Available in All-Gas
and Dual-Fuel models
C2Y366P4TW2

Upgrade to Brass Hardware
CXPR6HKPTCG

36" Commercial Hood
CVW93644PWM

**CustomFit ENERGY STAR®
Stainless Interior
Smart Dishwasher**

with Ultra Wash Top Rack
CDT888P4VW2

Upgrade to Brass Hardware
CXADTH1PVCG

Custom Speed Cook Oven
with Advantium® Technology
CSB913P4VW2

Upgrade to Brass Hardware
CXWS0H0PMC

**Professional Series 30"
Smart Built-In Convection
Single Wall Oven**
CTS90DP4NW2

Upgrade to Brass Hardware
CXWS0H0PMC

**CLICK TO
SHOP
THE LOOK**



THE Stylish Serenity KITCHEN

*Featured in
Matte White with
Brushed Brass Hardware*

This kitchen is defined by calm, warmth, and thoughtful design. Soft textures, rounded silhouettes, and a neutral palette create a space that feels more like a curated living area than a utilitarian room. It's approachable yet refined—where elegance meets ease, and where function and beauty don't have to be mutually exclusive.

“When I saw this
Matte White finish,
I realized that the
appliances are how
I can tie the whole
kitchen together.”

ASHLEY PARK

Actress and Musician
@PureWow The Kitchen Issue April 2024



**Smart Dual-Fuel
Commercial-Style
Range with 6 Burners**

Natural Gas
C2Y366P4TW2

Upgrade to Brass Hardware
CXPR6HKPTCG

**CustomFit ENERGY STAR®
Stainless Interior
Smart Dishwasher with
Ultra Wash Top Rack**
CDT888P4VW2

Upgrade to Brass Hardware
CXADTH1PVC

**BELLISSIMO Semi-Automatic
Espresso Machine + Frother**
C7CESAS4RW3

Couture™ Oven with Air Fry
C9OAAAS4RW3

**Specialty Grind and
Brew Coffee Maker
with Thermal Carafe**
C7CGAAS4TW3

**CLICK TO
SHOP
THE LOOK**

THE Maximalist KITCHEN

Featured in
Matte Black with
Brushed Brass Hardware

designed by

Isabel Ladd

Featured in *House Beautiful*,
Southern Living, and HGTV

More is more! Isabel Ladd invites us into her maximalist kitchen styled with Café. Bold patterns, vibrant colors, and rich details bring this kitchen to life. Designed for those who love drama and depth, this space layers textures and contrasts to create a look that is fearless, expressive, and full of character.



ENERGY STAR®
Smart 4-Door
French-Door Refrigerator
With Dual-Dispense
AutoFill Pitcher

Available in Standard
and Counter-Depth
CGE29DP3TD1
CJE23DP3WD1

Upgrade to Brass Hardware
CXQB4H4PNCG

Express Finish Toaster
C9TMA2S4PW3

Custom Speedcook oven
with Advantium® Technology
CSB913P3VD1

Upgrade to Brass Hardware
CXWS0H0PMC

Professional Series
30" Smart Built-In
Convection Single Wall Oven
CTS90DP3ND1

Upgrade to Brass Hardware
CXWS0H0PMC

“I love that you can
change out the hardware
depending on your mood and
it’s *a reflection of you* and
who you are right now.”



CLICK TO
SHOP
THE LOOK



THE Cabana Couture KITCHEN

*Featured in
Matte White with
Brushed Brass Hardware*

This beautiful, light kitchen will have you booking your next sunny getaway. Inspired by vintage art deco travel posters, tropical hues, bold textures, and lively patterns pop against the clean white backdrop for a vibrantly bright aesthetic.

“We already know Matte White works in a neutral palette, but I wanted to show people how striking the finish could be when used in a bolder design.”

TK Wismer
Creative Director, Café

36" Smart Dual-Fuel Commercial-Style Range

Available in All-Gas and Dual-Fuel models
C2Y366P4TW2

Upgrade to Brass Hardware
CXPR6HKPTCG

36" Commercial Hood

CVW93644PWW

Custom Speed Cook Oven with Advantium® Technology

CSB913P4VW2

Upgrade to Brass Hardware
CXWS0H0PMC

Professional Series 30" Smart Built-In Convection Single Wall Oven

CTS90DP4NW2

Upgrade to Brass Hardware
CXWS0H0PMC

CustomFit ENERGY STAR® Stainless Interior Smart Dishwasher

with Ultra Wash Top Rack
CDT888P4VW2

Upgrade to Brass Hardware
CXADTH1PVC

ENERGY STAR® Smart Single Drawer Dishwasher

CDD220P4WW2

CLICK TO
SHOP
THE LOOK



THE Black Tie Affair KITCHEN

*Featured in
Matte Black with
Flat Black Hardware*

This aesthetic brings the runway to your kitchen with bold, high-fashion details. Inspired by vibrant gowns, deep orange and beetroot tones pop against the black backdrop for an extra dose of drama.

**ENERGY STAR® Smart Counter-Depth
4-Door French-Door Refrigerator**
Available in Standard & Counter-Depth
CVE28DP3ND1 & CXE22DP3PD1

Upgrade to Flat Black Hardware
CXQB4H4PNFB

**30" Smart French-Door Double Wall Oven
with Convection**
CTD90FP3MD1

Upgrade to Flat Black Hardware
CXWDFHKPMFB

**48" Smart Dual-Fuel
Commercial-Style Range**
with 6 Burners and Griddle
C2Y486P3TD1

Upgrade to Flat Black Hardware
CXPR6HKPTFB

**36" Smart Designer Custom Insert
with Dimmable LED Lighting**
UVC9360SLSS

CLICK TO
COMPLETE
THE LOOK
WITH
KOHLER.

THE Earthen Essence KITCHEN

Featured in
Stainless Steel with
Brushed Bronze Hardware

Earth-toned neutrals warm this kitchen while vibrant shocks of color inject a playful pop of interest. Metallics lean stainless and bronze, harmonizing with the sustainable material of cork for a desert-inspired décor.

36" Integrated
Bottom-Freezer
Refrigerator
CIC36RP2VS1

Upgrade to
Brushed Copper
Hardware
CXSB3H3PVCU

30" Smart Slide-In,
Front-Control Radiant
and Convection Range
CES700P2MS1

Upgrade to Brushed
Copper Hardware
CXQD2H2PNCU

Beverage Center
CCP06BP2PS1

Upgrade to Brushed
Copper Hardware
CXQW1H1PPCU

Stainless Steel Interior Dishwasher
CDT888P2VS1

Upgrade to Brushed Copper Hardware
CXQD2H2PNCU

Creating
a mood
is also
about what
people
hear, taste
& feel.

CLICK TO
SHOP
THE LOOK

ENERGY STAR®
28.3 Cu. Ft. Smart
Quad-Door Refrigerator
with Dual-Dispense
AutoFill Pitcher
CAE28DM5TS5

PLATINUM GLASS FINISH

Like Nothing You've Seen Before

THE CAFÉ MODERN GLASS COLLECTION IN PLATINUM

is our newest appliance collection featuring a reflective glass finish. Its angular, modern lines match the most contemporary styles and the state-of-the-art features take your meals to the next level.

Inspired by the way light plays on glass, this collection lets you create a kitchen that's a total reflection of you. The smooth glass surface echoes the aura of your cooking space with a nod to modern design.

A true reflection of *you*.

Café™ 30" Smart Built-In
Convection Single Wall Oven
CTS90DM2NS5

ENERGY STAR® 22.3 Cu. Ft.
Smart Counter-Depth 4-Door
French-Door Refrigerator
CXE22DM5PS5

CustomFit ENERGY STAR®
Stainless Interior Smart
Dishwasher
with Ultra Wash
CDP888M5VS5



CLICK TO
SHOP
THE LOOK

REFRIGERATORS THAT Make a Statement in Your Kitchen



★★★★★

Not just a fridge,
a work of art

— Kelly B.



ENERGY STAR® 23.2 Cu. Ft.
Smart Counter-Depth
4-Door French-Door
Refrigerator
CJE23DP4WW2

LED Light Wall

Uniform light spans the back wall of the refrigerator, so every item is easy to find.

Convertible Drawer with Glass Dividers

This clean, aesthetic storage solution allows for simplified organization.

Convertible Drawer with Soft Freeze

An adjustable temperature drawer offers five customized temperature settings ranging from 23°F to 42°F.



Dual-Dispense AutoFill Pitcher

Enjoy chilled, delicious water anytime with a pitcher that automatically refills when placed on its docking station. Two curated pouring options give you quick access to filtered water.



Hello, Hot Water

WHO KNEW YOUR FRIDGE
COULD HANDLE TEA TIME?

Café's Hot Water Dispenser brings instant, filtered hot water right to your refrigerator door—stylish, smart, and always ready when you are.



170°
TEA



90°-185°
CUSTOM



185°
RAMEN

ENERGY STAR® 27.7 Cu. Ft.
Smart French-Door Refrigerator
CFE28TP4MW2

Upgrade to Brushed
Brass Hardware
CXLB3H3PMC



Cooking, Your Way

Café puts you in control—of how it cooks, how it looks, and how it fits your life. Whether you're after everyday ease or weekend wow, it's all about making you look great in the kitchen.



30" Touch-Control Electric Cooktop
CEP90301TBB



30" Smart Slide-In, Front-Control
Gas Double-Oven Range with Convection
CGS750P4MW2

Double the Ovens. Double the Options.

With two independent ovens and precise controls, the Café Double-Oven Range lets you bake, roast, or broil at two temps at once—perfect for multitasking meals or entertaining with ease.

TRUE CONVECTION

Get faster, more even baking with consistent heat circulation.

PRECISION TEMPERATURE CONTROL

Ideal for delicate bakes or high-heat sears.

BUILT-IN AIR FRY

Crispy results without the need for a separate appliance.

★★★★★

A jewel in my kitchen!

– Debrah

Your Centerpiece of Custom Cooking

This isn't just an oven—it's your secret weapon for getting dinner done fast and delicious. The Café Custom Speed Cook Oven with Advantium® technology combines the power of multiple appliances in one stylish oven.

FLEXIBILITY

Oven, microwave, toaster, warming drawer, speedcook and more in one.

COOKS 4X FASTER

Advantium® technology delivers oven-quality results without preheating.

SMART CONTROL

Built-in WiFi lets you cook remotely and access 175+ guided recipes.



Café™ 30" Custom Speed Cook Oven
with 120V Advantium® Technology
CSB913P4VW2



A place for everything.

Café's new CustomFit Dishwashers offer the ultimate flexibility for all your favorite items with the style and performance you expect.

★★★★★

Gorgeous and washes like a dream!

— Megan



24" CustomFit Dishwasher with UltraWash and Dual-Convection UltraDry CDT888P4VW2

CustomFit Top Rack with UltraWash

Load your way with an adjustable top rack that slides to accommodate taller items and features a zone with powerful jets to target stuck-on food.



CustomFit Basket with UltraWash

Accommodate more in this flexible basket with dedicated wash jets – designed to delicately clean all your silverware, tall stemware and reusable straws to a sparkling clean.



CustomFit Lid Caddy

Designed to hold lids and blender blades at the perfect position for cleaning, this Lid Caddy restricts water from pooling, so pieces come out clean and dry.



“With Café, designers finally have choice of finish, hardware and configuration at a mass premium price point.”

Erica Bovard

Senior Brand Director, Café

CUSTOMIZE YOUR CLEAN



24" Double Drawer Dishwasher CDD420P3TD1

COMPLETE WITH KNOCK TO PAUSE FEATURE



Smart Single Drawer Dishwasher CDD220P2WS1

FITS UP TO 7 PLACE SETTINGS

Choose Your Brew

Specialty Grind and Brew
Coffee Maker
with Thermal Carafe
C7CGAAS4TW3



★★★★★

Great features, phenomenal brew
– Cynthia

1. Save space with a compact, stylish design.

2. 75 oz. Removable Water Reservoir for simple refilling.

3. Internal Water Filter for the freshest brew.

4. WiFi enabled for access anywhere.
5. Adjustable Burr Grinder with 6 settings.

6. Accommodates whole bean or fresh ground coffee.

7. Gold Cup Standard SCA Certified Coffee.

8. Brew a single serving or an entire carafe.



Specialty Drip Coffee Maker
with Glass Carafe
C7CDABS4RW3
FOUR SCA CERTIFIED BREW MODES



BELLISSIMO Semi Automatic
Espresso Machine + Frother
C7CESAS2RS3
STATEMENT DRINKS MADE BY YOU



AFFETTO Automatic
Espresso Machine + Frother
C7CEBBS3RD3
EXTRA STYLE, EXTRA CAFFEINE

Complete the Look

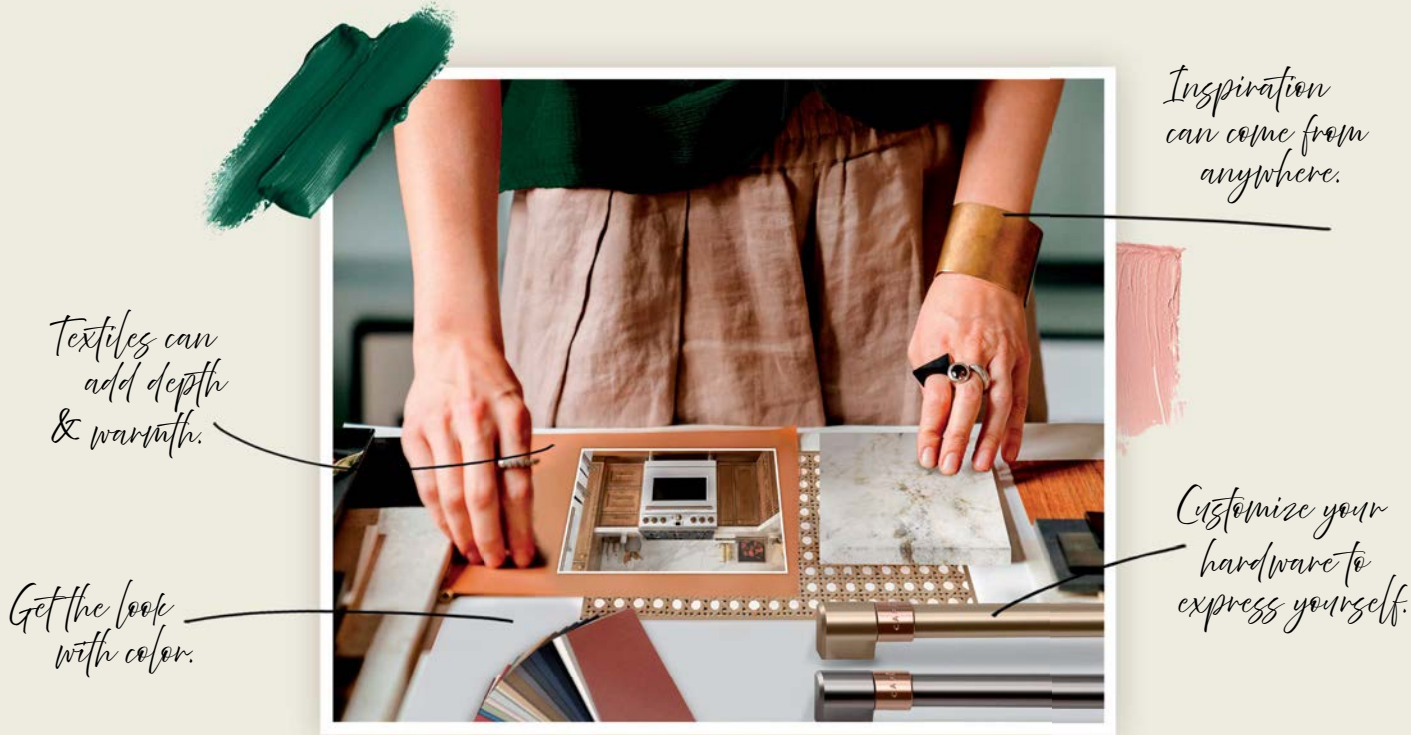
Express Finish Toaster
C9TMA2S4PW3



Couture™ Oven with Air Fry
C9OAAAS4R



THE
Style
STUDIO
BY CAFÉ



Your Kitchen Design Resource

In the middle of a full kitchen renovation or adding a little personal flair and need inspo? We're here to help. Small kitchen? We've got big ideas. Craving color? We've got a palette for that. Totally lost? We're your lifeline. Café is the design and style authority in the kitchen.

Your Design Questions Answered

WHAT WHITE PAINT COLOR IS RECOMMENDED TO COMPLEMENT MATTE WHITE APPLIANCES?

For a true white-on-white look, pair Sherwin-Williams Rock Candy with Café White. Its metallic chip may appear cool, so for warmth, try High Reflective White (SW 7757) or Pure White (SW 7005) to soften the space while matching Matte White appliances.

SW 7005 Pure White	SW 6231 Rock Candy
-----------------------	-----------------------

WHAT CABINET COLOR WOULD YOU RECOMMEND TO PAIR WITH CAFÉ'S MATTE BLACK APPLIANCES?

For a bold, moody look, try Sherwin-Williams Iron Ore (SW 7069) or the deeper Tricorn Black (SW 6258). Since lighting may reveal red or blue undertones, always test the color in your space first.

SW 6258 Tricorn Black	SW 7069 Iron Ore
--------------------------	---------------------

For The Trade

Café Trade Program

An exclusive offering for designers, builders, and trade professionals who turn bold ideas into beautifully lived-in spaces.

Get access to curated tools, personalized support, and our full suite of customizable appliances—plus exclusive incentives when you specify Café. Whether it's a single appliance or a full kitchen, every qualifying project is a chance to earn rewards.



JOIN THE CAFÉ TRADE PROGRAM

CLICK TO LEARN MORE



Transform your design process and save valuable time with seamless access to high-quality appliance finishes. Customize your look with our Matte White, Matte Black, Stainless Steel, and Platinum Glass appliance finishes and our six distinct hardware options.

KEY FEATURES:

- Order hardware and appliance finish samples by midnight (ET), receive by 10:30am the following day
- Free for architects, designers and specifiers
- Questions? Communicate with Café brand reps on Material Bank
- Samples delivered in one box



C A F É + KOHLER

TWO BOLD BRANDS. ONE DISTINCT LOOK.

Café continues to set trends with curated finishes inspired by the runway. Now Café joins design forces with iconic brand KOHLER to bring complementary hardware finishes to the kitchen space, so you can reflect your unique style. Together these brands are bold thought leaders in design that power self-expression.



CAFÉ
BRUSHED STAINLESS



KOHLER PURIST
SEMI-PROFESSIONAL
KITCHEN FAUCET
VIBRANT STAINLESS



CAFÉ
FLAT BLACK



KOHLER CRUE
KITCHEN FAUCET
MATTE BLACK



CAFÉ
BRUSHED BRONZE



KOHLER VIBRANT
KITCHEN FAUCET
BRUSHED BRONZE



CAFÉ
BRUSHED BRASS



KOHLER TONE
KITCHEN FAUCET
VIBRANT BRUSHED
MODERN BRASS

Choose *your* Refrigerator

4-Door
Refrigerators



MODEL FAMILY	CGE29	CJE23	CVE28	CXE22	CAE28	CHE23
Standard-Depth	✓		✓		✓	
Counter-Depth		✓		✓		✓
Dual-Dispense AutoFill Pitcher	✓	✓			✓	✓
Hands-Free AutoFill			✓	✓		
LED Light Wall	✓	✓	✓	✓	✓	✓
Convertible Drawer with Soft Freeze	✓	✓	✓	✓		
Fully Convertible Temperature Zone					✓	✓
Humidity Control System	✓	✓	✓	✓	✓	✓
Internal Ice	✓	✓			✓	✓
External Ice			✓	✓		
Advanced Water & Ice Filtration	✓	✓	✓	✓	✓	✓
Evaporators	Dual	Dual	Dual	Dual	Triple	Triple
Optional Customizable Handles	✓	✓	✓	✓		
Stainless Steel with Brushed Stainless Handles	CGE29DP2TS1	CJE23DP2WS1	CVE28DP2NS1	CXE22DP2PS1		
Matte White with Brushed Bronze Handles	CGE29DP4TW2	CJE23DP4WW2	CVE28DP4NW2	CXE22DP4PW2		
Matte Black with Brushed Stainless Handles	CGE29DP3TD1	CJE23DP3WD1	CVE28DP3ND1	CXE22DP3PD1		
Platinum Glass with Recessed handles	CGE29DM5TS5	CJE23DM5WS5	CVE28DM5NS5	CXE22DM5PS5	CAE28DM5TS5	CHE23DM5WS5
Capacity (Cu.Ft.)	28.7	23.2	27.8	22.3	28.3	22.9
Built-in WiFi with SmartHQ™	✓	✓	✓	✓	✓	✓

Choose *your* Dishwasher

Choose *your* Dishwasher

CustomFit
Dishwashers



MODEL FAMILY	CDT828	CDT858	CDT888	CDP888
dBA	42	44	39	39
Lid Caddy		✓	✓	✓
Wash Basket	✓	✓ with Ultra Wash Jets	✓ with Ultra Wash Jets	✓ with Ultra Wash Jets
Bottle Wash Jets	✓	✓ Dual Convection Ultra Dry	✓ Dual Convection Ultra Dry with Hidden Heat	✓ Dual Convection Ultra Dry with Hidden Heat
Ultra Dry	✓	✓	✓	✓
Upper & Lower Fold Down Tines			✓	✓
Adjustable Full Extension Middle Rack	✓	✓	✓	✓
Smart Features		✓	✓	✓
Luminous LED Interior Lights	✓	✓	✓	✓
Stainless Steel with Brushed Stainless Hardware	CDT828P2VS1	CDT858P2VS1	CDT888P2VS1	
Matte White with Brushed Bronze Hardware		CDT858P4VW2	CDT888P4VW2	
Matte Black with Brushed Stainless Hardware		CDT858P3VD1	CDT888P3VD1	
Platinum Glass				CDP888M5VS5

Drawer
Dishwashers



MODEL FAMILY	CDD420	CDD220
dBA	45	45
Cycles	6	6
Place Settings	7 Upper Drawer & 7 Lower Drawer	7
Active Flood Protect	✓	✓
ADA Compliant		✓
Stainless Steel with Brushed Stainless Hardware	CDD420P2TS1	CDD220P2WS1
Matte White with Brushed Bronze Hardware	CDD420P4TW2	CDD220P4WW2
Matte Black with Brushed Stainless Hardware	CDD420P3TD1	CDD220P3WD1

Choose *your* Freestanding Range

Freestanding Ranges



	ELECTRIC		INDUCTION			
MODEL FAMILY	CES700	CES750	CHS900P	CHS950P	CHS90XP	CHS90XM
Total Capacity (Cu. Ft.)	5.7	2.4 Upper 4.3 Lower	5.7	2.4 Upper 4.3 Lower	5.7	5.3
Built-in WiFi	✓	✓	✓	✓	✓	✓
No Preheat Air Fry (WiFi Enabled)	✓	✓	✓	✓	✓	✓
True Convection with Precise Air	✓	✓	✓	✓	✓	✓
# of Burners	5	5	5	5	5	5
Self-Clean with Steam	✓	✓	✓	✓	✓	✓
Heavy-Duty Roller Rack	✓	✓	✓	✓	✓	✓
In-Oven Camera					✓	✓
Cooktop Sensor					✓	✓
Temperature Probe	✓	✓	✓	✓	✓	✓
Sync Elements			✓	✓	✓	✓
Warming Drawer	✓		✓		✓	✓
Stainless Steel with Brushed Stainless Hardware	CES700P2MS1	CES750P2MS1	CHS900P2MS1	CHS950P2MS1	CHS90XP2MS1	
Matte White with Brushed Bronze Hardware	CES700P4MW2	CES750P4MW2	CHS900P4MW2	CHS950P4MW2		
Matte Black with Brushed Stainless Hardware	CES700P3MD1			CHS950P3MD1		
Platinum Glass with Recessed Handles						CHS90XM2NS5

Choose *your* Freestanding Range

Freestanding Ranges



	GAS		DUAL FUEL		PRO RANGE		
MODEL FAMILY	CGS700	CGS750	C2S900P	C2S950P	CGY366	C2Y366	C2Y486
Total Capacity (Cu. Ft.)	5.6	2.4 Upper 4.3 Lower	5.7	2.4 Upper 4.3 Lower	6.2	5.75	5.75 Caterer Oven 2.5 Everyday Oven
Dual Fuel			✓	✓		✓	✓
Built-in WiFi	✓	✓	✓	✓	✓	✓	✓
No Preheat Air Fry (WiFi Enabled)	✓	✓	✓	✓	✓	✓	✓
True Convection	✓	✓	✓ with Precise Air	✓ with Precise Air	✓ with Precise Air	✓ with Precise Air	✓ with Precise Air
# of Burners	6	6	6	6	6	6	6
Self-Clean with Steam	✓	✓	✓	✓	Steam Only	✓	✓
Heavy-Duty Roller Rack			✓	✓	✓	✓	2 Roller Racks
Integrated Griddle	✓	✓	✓	✓			✓
Caterer Oven					✓	✓	✓
Temperature Probe	✓	✓	✓	✓	✓	✓	✓
Warming Drawer			✓				
Stainless Steel with Brushed Stainless Hardware	CGS700P2MS1	CGS750P2MS1	C2S900P2MS1	C2S950P2MS1	CGY366P2TS1	C2Y366P2TS1	C2Y486P2TS1
Matte White with Brushed Bronze Hardware	CGS700P4MW2	CGS750P4MW2		C2S950P4MW2	CGY366P4TW2	C2Y366P4TW2	C2Y486P4TW2
Matte Black with Brushed Stainless Hardware	CGS700P3MD1				CGY366P3TD1	C2Y366P3TD1	C2Y486P3TD1
Platinum Glass with Recessed Handles	CGS700M2NS5						

Choose *your* Cooktops

Electric Cooktops



	RADIANT		INDUCTION	
MODEL FAMILY	CEP9030	CEP9036	CHP9030	CHP9036
Size	30"	36"	30"	36"
Electric Cooktop Sync Burners	✓	✓	✓	✓
Control Locks	✓	✓	✓	✓
Induction			✓	✓
Electronic Glide Touch-Controls	✓	✓	✓	✓
# of Burners	5	5	4	5
Power Boil on Tri- and Dual-Ring Elements	✓	✓		
Built-In WiFi Powered by SmartHQ™ App	✓	✓	✓	✓
Chef Connect	✓	✓	✓	✓
ENERGY STAR®			✓	✓
Stainless Steel with Brushed Stainless Hardware	CEP90302TSS	CEP90362TSS	CHP90302TSS	CHP90362TSS
Matte Black	CEP90301TBB	CEP90361TBB	CHP90301TBB	CHP90361TBB

Choose *your* Cooktops

Gas Cooktops



	GAS				GAS PRO RANGE	
MODEL FAMILY	CGP70302N	CGP70362N	CGP95302M	CGP95362M	CGU366P	CGU486P
Size	30"	36"	30	36"	36"	48"
Control Locks			✓	✓		
# of Burners	5	5	5	5	6	6
Power Boil on Tri- and Dual-Ring Elements			✓	✓		
Inspiral Burner					✓	✓
Multi-Ring Burner			✓	✓	✓	✓
Griddle (Optional)			✓	✓		✓ Integrated
High-Power Gas Burners	18k, 12k	18k, 15k	20k, 12k	20k, 15k	21k, 18k	21k, 18k
Continuous Edge-to-Edge Grates	✓	✓	✓	✓	✓	✓
Stainless Steel with Brushed Stainless Hardware	CGP70302NS1	CGP70362NS1	CGP95302MS1	CGP95362MS1	CGU366P2TS1	CGU486P2TS1
Matte Black					CGU366P3TD1	CGU486P3TD1
Matte White					CGU366P4TW2	CGU486P4TW2

Choose *your* Ovens

Single Wall Ovens



MODEL FAMILY	CKS70DP	CTS70DP	CTS90DM	CTS90DP	CTS90FP	CTS92DM
Size	27"	30"	30"	30"	30"	30"
Total Capacity (Cu. Ft.)	4.3	5.0	5.0	5.0	5.0	5.0
Precision Cooking	✔	✔	✔	✔	✔	✔
Brilliant Touch 7" Display	✔	✔	✔	✔	✔	✔
Convection	✔	✔	✔	✔	✔	✔
No Preheat Air Fry	✔	✔	✔	✔	✔	✔
True Euro Convection w/Direct Air	✔	✔	✔	✔	✔	✔
Two-In-One Oven						✔
Built-in WiFi Powered by SmartHQ™ App	✔	✔	✔	✔	✔	✔
Personalized Features + Upgrades	✔	✔	✔	✔	✔	✔
One-Time Connection			✔			
Temperature Probe	✔	✔	✔	✔	✔	✔
Self-Clean with Steam Clean	✔	✔	✔	✔	✔	✔
In-Oven Camera			✔	✔		
Voice to Open			✔			
Dehydrate Mode				✔		
Soft Close Doors	✔	✔	✔	✔	✔	✔
Dual Window French Door					✔	
Stainless Steel with Brushed Stainless Handles	CKS70DP2NS1	CTS70DP2NS1		CTS90DP2NS1	CTS90FP2NS1	
Matte Black with Brushed Stainless Handles				CTS90DP3ND1		
Matte White with Brushed Bronze Handles				CTS90DP4NW2		
Platinum Glass with Recessed Handles			CTS90DM2NS5			CTS92DM2NS5

Choose *your* Ovens

Double & Combination Wall Ovens



MODEL FAMILY	CKD70DP	CTD70DP	CTD90DM	CTD90DP	CTD90FP	CTC912P
Size	27"	30"	30"	30"	30"	30"
Total Capacity (Cu. Ft.)	8.6	10.0	10.0	10.0	10.0	6.7
Precision Cooking	✔	✔	✔	✔	✔	
Brilliant Touch 7" Display	✔	✔	✔	✔	✔	
Convection	✔	✔	✔	✔	✔	✔
Advantium™ Cooking Modes						✔
No Preheat Air Fry	✔	✔	✔	✔	✔	
True Euro Convection w/Direct Air	✔	✔	✔	✔	✔	✔
Built-in WiFi Powered by SmartHQ™ App	✔	✔	✔	✔	✔	
Personalized Features + Upgrades	✔	✔	✔	✔	✔	
One-Time Connection			✔			
Temperature Probe	✔	✔	✔	✔	✔	✔
Self-Clean with Steam Clean	✔	✔	✔	✔	✔	✔
In-Oven Camera			✔	✔		
Voice to Open			✔			
Dehydrate Mode				✔		
Soft Close Doors	✔	✔	✔	✔	✔	✔
Dual Window French Door					✔	
Stainless Steel with Brushed Stainless Handles	CTD70DP2N	CTD70DP2N		CTD90DP2NS1	CTD90FP2NS1	CTC912P2NS1
Matte Black with Brushed Stainless Handles				CTD90DP3ND1	CTD90FP3ND1	
Matte White with Brushed Bronze Handles				CTD90DP4NW2	CTD90FP4NW2	
Platinum Glass with Recessed Handles			CTD90DM2NS5			



Electric Warming Drawer
MODEL CTW900P

Size	30"	Variable Humidity	Crisp Moist
Total Capacity (Cu. Ft.)	1.9	Stainless Steel with Brushed Stainless Handles	CTW900P2PS1
Half Rack	✔	Matte Black with Brushed Stainless Handles	CTW900P3PD1
One-Piece Stainless Steel Drawer	✔	Matte White with Brushed Bronze Handles	CTW900P4PW2
Variable Temperature Control	✔		

PRODUCT

Selection Guide

	STAINLESS	MATTE WHITE	MATTE BLACK	PLATINUM GLASS
BOTTOM-FREEZER REFRIGERATION				
19 CU. FT. 33", COUNTER-DEPTH REFRIGERATOR, INTERNAL DISPENSER	CWE19SP2NS1	CWE19SP4NW2	CWE19SP3ND1	
23 CU. FT. FRENCH-DOOR REFERIGERATOR	CWE23SP2MS1	CWE23SP4MW2	CWE23SP3MD1	
22 CU. FT. COUNTER-DEPTH REFRIGERATOR, EXTERNAL ICE & WATER	CYE22TP2MS1	CYE22TP4MW2	CYE22TP3MD1	
28 CU. FT. FRENCH-DOOR REFRIGERATOR, HOT WATER DISPENSER	CFE28TP2MS1	CFE28TP4MW2	CFE28TP3MD1	
22 CU. FT. 4-DOOR COUNTER-DEPTH REFRIGERATOR	CXE22DP2PS1	CXE22DP4PW2	CXE22DP3PD1	CXE22DM5PS5
28 CU. FT. 4-DOOR REFRIGERATOR	CVE28DP2NS1	CVE28DP4NW2	CVE28DP3ND1	CVE28DM5NS5
23.2 CU. FT. SMART COUNTER-DEPTH 4-DOOR FRENCH-DOOR REFRIGERATOR WITH DUAL-DISPENSE AUTOFILL PITCHER	CJE23DP2WS1	CJE23DP4WW2	CJE23DP3WD1	CJE23DM5WS5
29 CU. FT. 4-DOOR REFRIGERATOR WITH DUAL-DISPENSE AUTOFILL PITCHER	CGE29DP2TS1	CGE29DP4TW2	CGE29DP3TD1	CGE29DM5TS5
22.9 CU. FT. SMART QUAD-DOOR REFRIGERATOR IN PLATINUM GLASS WITH DUAL-DISPENSE AUTOFILL PITCHER				CHE23DM5WS5
28 CU. FT. QUAD-DOOR REFRIGERATOR, PLATINUM GLASS				CAE28DM5TS5
BUILT-IN REFRIGERATION				
36" INTEGRATED BOTTOM FREEZER, SINGLE DOOR, LEFT HINGE	CIC36LP2VS1			
36" INTEGRATED BOTTOM FREEZER, SINGLE DOOR, RIGHT HINGE	CIC36RP2VS1			
36" INTEGRATED FRENCH-DOOR BOTTOM FREEZER	CIP36NP2VS1			
42" BUILT-IN SXS REFRIGERATOR, EXTERNAL ICE & WATER	CSB42YP2NS1			
42" BUILT-IN SXS REFRIGERATOR, NON-DISPENSER	CSB42WP2NS1			
48" BUILT-IN SXS REFRIGERATOR, EXTERNAL ICE & WATER	CSB48YP2NS1			
48" BUILT-IN SXS REFRIGERATOR, NON-DISPENSER	CSB48WP2NS1			
SIDE-BY-SIDE REFRIGERATION				
22" SXS, COUNTER-DEPTH REFRIGERATOR, EXTERNAL ICE & WATER	CZS22MP2NS1			
WINE RESERVES & BEVERAGE CENTERS				
UNDERCOUNTER BEVERAGE CENTER	CCP06BP2PS1	CCP06BP4PW2	CCP06BP3PD1	CCR06BM2PS5
UNDERCOUNTER WINE CENTER	CCP06DP2PS1	CCP06DP4PW2		
ICE MAKERS				
15" ICE MAKER, CLEAR ICE	UCC15NPRII			
15" ICE MAKER, NUGGET ICE	UNC15NPR1I			
DOOR PANEL KIT	CK1UP15ORS1	CK1UP15ORW2	CK1UP15ORD1	
BUILT-IN DISHWASHERS				
CUSTOMFIT SMART DISHWASHER - ULTRA WASH & DRY, 42 DBA	CDT828P2VS1			
CUSTOMFIT SMART DISHWASHER - ULTRA WASH TOP RACK AND DUAL CONVECTION ULTRA DRY, 44 DBA	CDT858P2VS1	CDT858P4VW2	CDT858P3VD1	
CUSTOMFIT SMART DISHWASHER - ULTRA WASH TOP RACK AND DUAL CONVECTION ULTRA DRY, LED LIGHTS, 39 DBA	CDT888P2VS1	CDT888P4VW2	CDT888P3VD1	CDP888M5VS5
DISHWASHER DRAWERS				
DOUBLE DRAWER	CDD420P2TS1	CDD420P4TW2	CDD420P3TD1	
SINGLE DRAWER	CDD220P2WS1	CDD220P4VW2	CDD220P3WD1	

	STAINLESS	MATTE WHITE	MATTE BLACK	PLATINUM GLASS
BUILT-IN MICROWAVE OVENS				
1.2 CU. FT. BUILT-IN MICROWAVE DRAWER OVEN	CWL112P2RS1	CWL112P4RW5	CWL112P3RD5	
30" BUILT-IN MICROWAVE/CONVECTION OVEN	CWB713P2VS1			
OVER-THE-RANGE MICROWAVE OVENS				
1.2 CU. FT. OVER-THE-RANGE LOW PROFILE SENSOR MICROWAVE OVEN				UVM9125STS5
17 CU. FT. OVER-THE-RANGE MICROWAVE, CONVECTION, AIR FRY	CVM517P2RS1	CVM517P4RW2	CVM517P3RD1	
1.9 CU. FT. OVER-THE-RANGE MICROWAVE OVEN	CVM519P2PS1			
2.1 OVER-THE-RANGE MICROWAVE, CHEF CONNECT	CVM521P2MS1			
2.1 OVER-THE-RANGE MICROWAVE, CHEF CONNECT, PLATINUM GLASS				CVM721M2NS5
SPEEDCOOKING WALL OVENS				
27" 120V BUILT-IN ADVANTIUM®	CSB912P2VS1			
30" 120V BUILT-IN ADVANTIUM®	CSB913P2VS1	CSB913P4VW2	CSB913P3VD1	CSB913M2VS5
30" 240V BUILT-IN ADVANTIUM®	CSB923P2VS1			
COUNTERTOP MICROWAVE OVEN				
1.5 CU. FT. SMART COUNTERTOP CONVECTION/MICROWAVE OVEN	CCWK15C1WSS	CCWK15C1WWM	CCWK15C1WDS	
ELECTRIC COOKTOPS				
30" INDUCTION COOKTOP, BLACK OR STAINLESS	CHP90302TSS		CHP90301TB8	
30" RADIANT COOKTOP, BLACK OR STAINLESS	CEP90302TSS		CEP90301TB8	
36" INDUCTION COOKTOP, BLACK OR STAINLESS	CHP90362TSS		CHP90361TB8	
36" RADIANT COOKTOP, BLACK OR STAINLESS	CEP90362TSS		CEP90361TB8	
ELECTRIC RANGES				
30" SMART SLIDE-IN, FRONT-CONTROL, RADIANT & CONVECTION DOUBLE-OVEN RANGE	CES750P2MS1	CES750P4MW2		
30" SMART SLIDE-IN, FRONT-CONTROL, INDUCTION & CONVECTION DOUBLE-OVEN RANGE	CHS950P2MS1	CHS950P4MW2	CHS950P3MD1	
30" SLIDE-IN INDUCTION, CONVECTION, IN-OVEN CAMERA	CHS90XP2MS1			
30" SLIDE-IN INDUCTION, CONVECTION, IN-OVEN CAMERA , PLATINUM GLASS				CHS90XM2NS5
30" SLIDE-IN, SELF-CLEAN, INDUCTION, CONVECTION, WARMING DRAWER	CHS900P2MS1	CHS900P4MW2		
30" SLIDE-IN SELF-CLEAN, RADIANT, CONVECTION	CES700P2MS1	CES700P4MW2	CES700P3MD1	
ELECTRIC SINGLE WALL OVENS				
27" SINGLE ELECTRIC WALL OVEN	CKS70DP2NS1			
30" ELECTRIC WALL OVEN, CONVECTION, ADVANTIUM®	CTC912P2NS1			
30" SINGLE ELECTRIC FRENCH-DOOR WALL OVEN	CTS90FP2NS1	CTS90FP4NW2	CTS90FP3ND1	
30" SINGLE ELECTRIC WALL OVEN, CONVECTION	CTS70DP2NS1			CTS70DM2NS5
30" SINGLE ELECTRIC WALL OVEN, CONVECTION, IN-OVEN CAMERA	CTS90DP2NS1	CTS90DP4NW2	CTS90DP3ND1	
30" SINGLE TWIN-FLEX WALL OVEN, PLATINUM GLASS	CKD70DP2NS1			CTS92DM2NS5
ELECTRIC DOUBLE WALL OVENS				
27" DOUBLE ELECTRIC WALL OVEN				
30" DOUBLE ELECTRIC FRENCH-DOOR WALL OVEN, IN-OVEN CAMERA	CTD90FP2NS1	CTD90FP4NW2	CTD90FP3ND1	
30" DOUBLE ELECTRIC WALL OVEN, CONVECTION	CTD70DP2NS1			
30" DOUBLE ELECTRIC WALL OVEN, CONVECTION, IN-OVEN CAMERA	CTD90DP2NS1	CTD90DP4NW2	CTD90DP3ND1	
GAS COOKTOPS				
30" GAS COOKTOP	CGP70302NS1			
36" GAS COOKTOP	CGP70362NS1			

	STAINLESS	MATTE WHITE	MATTE BLACK	PLATINUM GLASS
GAS RANGES				
30" SLIDE-IN DUAL-FUEL CONVECTION, WARMING DRAWER	C2S900P2MS1			
30" SLIDE-IN SELF-CLEAN, DOUBLE-OVEN CONVECTION	CGS750P2MS1	CGS750P4MW2		
30" SLIDE-IN SELF-CLEAN, CONVECTION	CGS700P2MS1	CGS700P4MW2	CGS700P3MD1	CGS700M2NS5
COOKING WARMING DRAWER				
30" WARMING DRAWER	CTW900P2PS1	CTW900P4PW2	CTW900P3PD1	
COMMERCIAL-STYLE GAS RANGETOPS				
36" RANGETOP, 6 BURNER	CGU366P2TS1	CGU366P4TW2	CGU366P3TD1	
48" RANGETOP, 6 BURNER, GRIDDLE	CGU486P2TS1	CGU486P4TW2	CGU486P3TD1	
COMMERCIAL-STYLE RANGES				
36" ALL GAS, 6 BURNER	CGY366P2TS1	CGY366P4TW2	CGY366P3TD1	
36" DUAL-FUEL, 6 BURNER	C2Y366P2TS1	C2Y366P4TW2	C2Y366P4TD1	
48" DUAL-FUEL, 6 BURNER, GRIDDLE	C2Y486P2TS1	C2Y486P4TW2	C2Y486P3TD1	
HOODS				
30" UNIVERSAL CUSTOM HOOD INSERT	UVC7300SLSS			
30" UNIVERSAL TELESCOPIC DOWNDRAFT SYSTEM	UVD6301SPSS			
36" DESIGNER ISLAND-MOUNT CHIMNEY VENT HOOD WITH CLEAN AIR SENSORS	UVI1036SRSS			
36" UNIVERSAL TELESCOPIC DOWNDRAFT SYSTEM	UVD6361SPSS			
30" COMMERCIAL HOOD		CVW93044PWM	CVW93043PDS	
30" COMMERCIAL-STYLE VENT HOOD	UVW93042PSS			
30" CUSTOM INSERT	UVC9300SLSS			
30" DESIGNER WALL-MOUNT CHIMNEY VENT HOOD	UVW8301SLSS			
36" DESIGNER WALL-MOUNT VENT HOOD	UVW8364SPSS			
30" SMART DESIGNER CHIMNEY WALL-MOUNT - PERIMETER VENT HOOD	UVW9301SLSS			
30" WALL-MOUNT CHIMNEY HOOD	UVW7301SWSS			
30" WALL-MOUNT GLASS CANOPY CHIMNEY HOOD	CVW73012MSS	CVW73014MWM		
36" COMMERCIAL HOOD		CVW93644PWM	CVW93643PDS	
36" COMMERCIAL-STYLE VENT HOOD	UVW93642PSS			
36" CUSTOM INSERT	UVC9360SLSS			
36" DESIGNER WALL-MOUNT CHIMNEY VENT HOOD	UVW8361SLSS			
30" DESIGNER WALL-MOUNT VENT HOOD	UVW8304SPSS			
36" ISLAND-MOUNT CHIMNEY HOOD	UVI7361SWSS			
36" SMART DESIGNER CHIMNEY WALL-MOUNT - PERIMETER VENT HOOD	UVW9361SLSS			
36" WALL-MOUNT CHIMNEY HOOD	UVW7361SWSS			
36" WALL-MOUNT GLASS CANOPY CHIMNEY HOOD	CVW73612MSS	CVW73614MWM		
42" CUSTOM INSERT	UVC9420SLSS			
48" COMMERCIAL-STYLE HOOD	UVW9484SPSS			
48" CUSTOM INSERT	UVC9480SLSS			
ESPRESSO MACHINES				
BELLISSIMO SEMI-AUTOMATIC ESPRESSO MACHINE + FROTHER	C7CESAS2RS3	C7CESAS4RW3	C7CESAS3RD3	
COFFEE MAKERS				
SPECIALTY DRIP	C7CDAAS2PS3	C7CDAAS4PW3	C7CDAAS3PD3	
SPECIALTY DRIP, GLASS CARAFE	C7CDABS2RS3	C7CDABS4RW3	C7CDABS3RD3	
SPECIALTY GRIND & BREW, THERMAL CARAFE	C7CGAAS2TS3	C7CGAAS4TW3	C7CGAAS3TD3	
COUTURE™ OVEN				
COUTURE OVEN, AIR FRY	C9OAAAS2RS3	C9OAAAS4RW3	C9OAAAS3RD3	
TOASTER				
EXPRESS FINISH TOASTER	C9TMA2S2PS3	C9TMA2S4PW3	C9TMA2S3PD3	



THE HARDWARE Customization Guide

Keep your original hardware included with your Café customizable appliance or choose a different finish that reflects your kitchen style.

	MODEL	BRUSHED STAINLESS KIT (SS)	BRUSHED BRONZE KIT (BZ)	BRUSHED BLACK KIT (BT)	BRUSHED COPPER KIT (CU)	FLAT BLACK KIT (FB)	BRUSHED BRASS KIT (CG)
BOTTOM- FREEZER REFRIGERATION							
19 CU. FT. 33", COUNTER-DEPTH REFRIGERATOR, INTERNAL DISPENSER	CWE19SP2NS1	INCLUDED	CXMA3H3PNBZ	CXMA3H3PNBT	CXMA3H3PNCU	CXMA3H3PNFB	CXMA3H3PNCG
19 CU. FT. 33", COUNTER-DEPTH REFRIGERATOR, INTERNAL DISPENSER	CWE19SP3ND1	INCLUDED	CXMA3H3PNBZ	CXMA3H3PNBT	CXMA3H3PNCU	CXMA3H3PNFB	CXMA3H3PNCG
19 CU. FT. 33", COUNTER-DEPTH REFRIGERATOR, INTERNAL DISPENSER	CWE19SP4NW2	CXMA3H3PNSS	INCLUDED	CXMA3H3PNBT	CXMA3H3PNCU	CXMA3H3PNFB	CXMA3H3PNCG
23 CU. FT FRENCH-DOOR REFRIGERATOR + INTERNAL DISPENSER	CWE23SP2MS1	INCLUDED	CXLB3H3PMBZ	CXLB3H3PMBT	CXLB3H3PMCU	CXLB3H3PMFB	CXLB3H3PMCG
22 CU. FT. COUNTER-DEPTH REFRIGERATOR, HOT WATER DISPENSER	CYE22TP2MS1	INCLUDED	CXLB3H3PMBZ	CXLB3H3PMBT	CXLB3H3PMCU	CXLB3H3PMFB	CXLB3H3PMCG
22 CU. FT. COUNTER-DEPTH REFRIGERATOR, EXTERNAL ICE & WATER	CYE22TP3MD1	INCLUDED	CXLB3H3PMBZ	CXLB3H3PMBT	CXLB3H3PMCU	CXLB3H3PMFB	CXLB3H3PMCG
22 CU. FT. COUNTER-DEPTH REFRIGERATOR, EXTERNAL ICE & WATER	CYE22TP4MW2	CXLB3H3PMSS	INCLUDED	CXLB3H3PMBT	CXLB3H3PMCU	CXLB3H3PMFB	CXLB3H3PMCG
28 CU. FT. FRENCH-DOOR REFRIGERATOR, HOT WATER DISPENSER	CFE28TP2MS1	INCLUDED	CXLB3H3PMBZ	CXLB3H3PMBT	CXLB3H3PMCU	CXLB3H3PMFB	CXLB3H3PMCG
28 CU. FT. FRENCH-DOOR REFRIGERATOR, HOT WATER DISPENSER	CFE28TP3MD1	INCLUDED	CXLB3H3PMBZ	CXLB3H3PMBT	CXLB3H3PMCU	CXLB3H3PMFB	CXLB3H3PMCG
28 CU. FT. FRENCH-DOOR REFRIGERATOR, HOT WATER DISPENSER	CFE28TP4MW2	CXLB3H3PMSS	INCLUDED	CXLB3H3PMBT	CXLB3H3PMCU	CXLB3H3PMFB	CXLB3H3PMCG

	MODEL	BRUSHED STAINLESS KIT (SS)	BRUSHED BRONZE KIT (BZ)	BRUSHED BLACK KIT (BT)	BRUSHED COPPER KIT (CU)	FLAT BLACK KIT (FB)	BRUSHED BRASS KIT (CG)
BOTTOM- FREEZER REFRIGERATION (CONT.)							
22 CU. FT. 4-DOOR COUNTER-DEPTH REFRIGERATOR + EXTERNAL ICE & WATER	CXE22DP2PS1	INCLUDED	CXQB4H4PNBZ	CXQB4H4PNBT	CXQB4H4PNCU	CXQB4H4PNFB	CXQB4H4PNCG
22 CU. FT. 4-DOOR COUNTER-DEPTH REFRIGERATOR + EXTERNAL ICE & WATER	CXE22DP3PD1	INCLUDED	CXQB4H4PNBZ	CXQB4H4PNBT	CXQB4H4PNCU	CXQB4H4PNFB	CXQB4H4PNCG
22 CU. FT. 4-DOOR COUNTER-DEPTH REFRIGERATOR + EXTERNAL ICE & WATER	CXE22DP4PW2	CXQB4H4PNSS	INCLUDED	CXQB4H4PNBT	CXQB4H4PNCU	CXQB4H4PNFB	CXQB4H4PNCG
28 CU. FT. 4-DOOR REFRIGERATOR	CVE28DP3ND1	INCLUDED	CXQB4H4PNBZ	CXQB4H4PNBT	CXQB4H4PNCU	CXQB4H4PNFB	CXQB4H4PNCG
28 CU. FT. 4-DOOR REFRIGERATOR	CVE28DP4NW2	CXQB4H4PNSS	INCLUDED	CXQB4H4PNBT	CXQB4H4PNCU	CXQB4H4PNFB	CXQB4H4PNCG
28 CU. FT. 4-DOOR REFRIGERATOR	CVE28DP3ND1	INCLUDED	CXQB4H4PNBZ	CXQB4H4PNBT	CXQB4H4PNCU	CXQB4H4PNFB	CXQB4H4PNCG
23.2 CU. FT. SMART COUNTER-DEPTH 4-DOOR FRENCH-DOOR REFRIGERATOR WITH DUAL-DISPENSE AUTOFILL PITCHER	CJE23DP2WS1	INCLUDED	CXQB4H4PNSS	CXQB4H4PNBT	CXQB4H4PNCU	CXQB4H4PNFB	CXQB4H4PNCG
23.2 CU. FT. SMART COUNTER-DEPTH 4-DOOR FRENCH-DOOR REFRIGERATOR WITH DUAL-DISPENSE AUTOFILL PITCHER	CJE23DP4WW2	CXQB4H4PNSS	CXLB3H3PMBZ	CXQB4H4PNBT	CXQB4H4PNCU	CXQB4H4PNFB	CXQB4H4PNCG
23.2 CU. FT. SMART COUNTER-DEPTH 4-DOOR FRENCH-DOOR REFRIGERATOR WITH DUAL-DISPENSE AUTOFILL PITCHER	CJE23DP3WD1	INCLUDED	CXQB4H4PNSS	CXQB4H4PNBT	CXQB4H4PNCU	CXQB4H4PNFB	CXQB4H4PNCG
29 CU. FT. 4-DOOR REFRIGERATOR, DUAL-DISPENSE AUTO-FILL PITCHER	CGE29DP2TS1	INCLUDED	CXQB4H4PNBZ	CXQB4H4PNBT	CXQB4H4PNCU	CXQB4H4PNFB	CXQB4H4PNCG
29 CU. FT. 4-DOOR REFRIGERATOR, DUAL-DISPENSE AUTO-FILL PITCHER	CGE29DP3TD1	INCLUDED	CXQB4H4PNBZ	CXQB4H4PNBT	CXQB4H4PNCU	CXQB4H4PNFB	CXQB4H4PNCG
29 CU. FT. 4-DOOR REFRIGERATOR, DUAL-DISPENSE AUTO-FILL PITCHER	CGE29DP4TW2	CXQB4H4PNSS	INCLUDED	CXQB4H4PNBT	CXQB4H4PNCU	CXQB4H4PNFB	CXQB4H4PNCG
23 CU. FT. FRENCH-DOOR REFERIGERATOR + INTERNAL DISPENSER	CWE23SP3MD1	INCLUDED	CXLB3H3PMBZ	CXLB3H3PMBT	CXLB3H3PMCU	CXLB3H3PMFB	CXLB3H3PMCG
23 CU. FT. FRENCH-DOOR REFERIGERATOR + INTERNAL DISPENSER	CWE23SP4MW2	CXLB3H3PMSS	INCLUDED	CXLB3H3PMBT	CXLB3H3PMCU	CXLB3H3PMFB	CXLB3H3PMCG
BUILT-IN REFRIGERATION							
36" INTEGRATED BOTTOM FREEZER, SINGLE DOOR, LEFT HINGE	CIC36LP2VS1	INCLUDED	CXSB3H3PVBZ	CXSB3H3PVBT	CXSB3H3PVCU	CXSB3H3PVFB	CXSB3H3PVCG
36" INTEGRATED BOTTOM FREEZER, SINGLE DOOR, RIGHT HINGE	CIC36RP2VS1	INCLUDED	CXSB3H3PVBZ	CXSB3H3PVBT	CXSB3H3PVCU	CXSB3H3PVFB	CXSB3H3PVCG
36" INTEGRATED FRENCH-DOOR BOTTOM FREEZER	CIP36NP2VS1	INCLUDED	CXSB4H4PVBZ	CXSB4H4PVBT	CXSB4H4PVCU	CXSB4H4PVFB	CXSB4H4PVCG
42" BUILT-IN SXS REFRIGERATOR, EXTERNAL ICE & WATER	CSB42YP2NS1	INCLUDED	CXSS2H2PMBZ	CXSS2H2PMBT	CXSS2H2PMCU	CXSS2H2PMFB	CXSS2H2PMCG
42" BUILT-IN SXS REFRIGERATOR, NON-DISPENSER	CSB42WP2NS1	INCLUDED	CXSS2H2PMBZ	CXSS2H2PMBT	CXSS2H2PMCU	CXSS2H2PMFB	CXSS2H2PMCG
48" BUILT-IN SXS REFRIGERATOR, EXTERNAL ICE & WATER	CSB48YP2NS1	INCLUDED	CXSS2H2PMBZ	CXSS2H2PMBT	CXSS2H2PMCU	CXSS2H2PMFB	CXSS2H2PMCG
48" BUILT-IN SXS REFRIGERATOR, NON-DISPENSER	CSB48WP2NS1	INCLUDED	CXSS2H2PMBZ	CXSS2H2PMBT	CXSS2H2PMCU	CXSS2H2PMFB	CXSS2H2PMCG
SIDE-BY-SIDE REFRIGERATION							
COUNTER-DEPTH REFRIGERATOR, EXTERNAL ICE & WATER	CZS22MP2NS1	INCLUDED	CXMS2H2PNBZ	CXMS2H2PNBT	CXMS2H2PNCU	CXMS2H2PNFB	CXMS2H2PNCG
WINE RESERVES & BEVERAGE CENTERS							
UNDERCOUNTER BEVERAGE CENTER	CCP06BP2PS1	INCLUDED	CXQW1H1PPBZ	CXQW1H1PPBT	CXQW1H1PPCU	CXQW1H1PPFB	CXQW1H1PPCG
UNDERCOUNTER BEVERAGE CENTER	CCP06BP3PD1	INCLUDED	CXQW1H1PPBZ	CXQW1H1PPBT	CXQW1H1PPCU	CXQW1H1PPFB	CXQW1H1PPCG
UNDERCOUNTER BEVERAGE CENTER	CCP06BP4PW2	CXQW1H1PPSS	INCLUDED	CXQW1H1PPBT	CXQW1H1PPCU	CXQW1H1PPFB	CXQW1H1PPCG
UNDERCOUNTER WINE CENTER	CCP06DP2PS1	INCLUDED	CXQW1H1PPBZ	CXQW1H1PPBT	CXQW1H1PPCU	CXQW1H1PPFB	CXQW1H1PPCG
UNDERCOUNTER WINE CENTER	CCP06DP4PW2	CXQW1H1PPSS	INCLUDED	CXQW1H1PPBT	CXQW1H1PPCU	CXQW1H1PPFB	CXQW1H1PPCG

	MODEL	BRUSHED STAINLESS KIT (SS)	BRUSHED BRONZE KIT (BZ)	BRUSHED BLACK KIT (BT)	BRUSHED COPPER KIT (CU)	FLAT BLACK KIT (FB)	BRUSHED BRASS KIT (CG)
ICEMAKERS							
ICEMAKER DOOR PANEL KIT	CK1UP150RD1	INCLUDED	CXQW1H1PPBZ	CXQW1H1PPBT	CXQW1H1PPCU	CXQW1H1PPFB	CXQW1H1PPCG
ICEMAKER DOOR PANEL KIT	CK1UP150RS1	INCLUDED	CXQW1H1PPBZ	CXQW1H1PPBT	CXQW1H1PPCU	CXQW1H1PPFB	CXQW1H1PPCG
ICEMAKER DOOR PANEL KIT	CK1UP150RW2	CXQW1H1PPSS	INCLUDED	CXQW1H1PPBT	CXQW1H1PPCU	CXQW1H1PPFB	CXQW1H1PPCG
BUILT-IN DISHWASHERS							
CUSTOMFIT SMART DISHWASHER - ULTRA WASH & DRY, 42 DBA	CDT828P2VS1	INCLUDED	CXADTH1PVBZ	CXADTH1PVBT	CXADTH1PVCU	CXADTH1PVFB	CXADTH1PVCG
CUSTOMFIT SMART DISHWASHER - ULTRA WASH TOP RACK AND DUAL CONVECTION ULTRA DRY, 44 DBA	CDT858P2VS1	INCLUDED	CXADTH1PVBZ	CXADTH1PVBT	CXADTH1PVCU	CXADTH1PVFB	CXADTH1PVCG
CUSTOMFIT SMART DISHWASHER - ULTRA WASH TOP RACK, DUAL CONVECTION ULTRA DRY, LED LIGHTS, 39 DBA	CDT888P2VS1	INCLUDED	CXADTH1PVBZ	CXADTH1PVBT	CXADTH1PVCU	CXADTH1PVFB	CXADTH1PVCG
DISHWASHER DRAWERS							
DOUBLE DRAWERS	CDD420P2TS1	INCLUDED	CXQD2H2PNBZ	CXQD2H2PNBT	CXQD2H2PNCU	CXQD2H2PNFB	CXQD2H2PNCG
DOUBLE DRAWERS	CDD420P3TD1	INCLUDED	CXQD2H2PNBZ	CXQD2H2PNBT	CXQD2H2PNCU	CXQD2H2PNFB	CXQD2H2PNCG
DOUBLE DRAWERS	CDD420P4TW2	CXQD2H2PNSS	INCLUDED	CXQD2H2PNBT	CXQD2H2PNCU	CXQD2H2PNFB	CXQD2H2PNCG
SINGLE DRAWER	CDD220P2WS1	INCLUDED	CXADTH1PMBZ	CXADTH1PMBT	CXADTH1PMCU	CXADTH1PMFB	CXADTH1PMCG
BUILT-IN MICROWAVES							
30" BUILT-IN MICROWAVE, CONVECTION	CWB713P2VS1	INCLUDED	CXB30HKPNBZ	CXB30HKPNBT	CXB30HKPNCU	CXB30HKPNFB	CXB30HKPNCG
OVER-THE-RANGE MICROWAVES							
17 CU.FT. OVER-THE-RANGE MICROWAVE, CONVECTION, AIR FRY	CVM517P2RS1	INCLUDED	CXOTRHKPMBZ	CXOTRHKPMBT	CXOTRHKPMCU	CXOTRHKPMFB	CXOTRHKPMCG
17 CU.FT. OVER-THE-RANGE MICROWAVE, CONVECTION, AIR FRY	CVM517P3RD1	INCLUDED	CXOTRHKPMBZ	CXOTRHKPMBT	CXOTRHKPMCU	CXOTRHKPMFB	CXOTRHKPMCG
17 CU.FT. OVER-THE-RANGE MICROWAVE, CONVECTION, AIR FRY	CVM517P4RW2	CXOTRHKMSS	INCLUDED	CXOTRHKPMBT	CXOTRHKPMCU	CXOTRHKPMFB	CXOTRHKPMCG
19 CU. FT. OVER-THE-RANGE MICROWAVE OVEN	CVM519P2PS1	INCLUDED	CXOTRHKPMBZ	CXOTRHKPMBT	CXOTRHKPMCU	CXOTRHKPMFB	CXOTRHKPMCG
21 CU. FT. OVER-THE-RANGE MICROWAVE, CHEF CONNECT	CVM521P2MS1	INCLUDED	CXOTRHKPMBZ	CXOTRHKPMBT	CXOTRHKPMCU	CXOTRHKPMFB	CXOTRHKPMCG
SPEED COOKING WALL OVENS							
27" 120V BUILT-IN ADVANTIUM®	CSB912P2VS1	INCLUDED	CXWS7H0PNBZ	CXWS7H0PNBT	CXWS7H0PNCU	CXWS7H0PNFB	CXWS7H0PNCG
30" 120V BUILT-IN ADVANTIUM®	CSB913P2VS1	INCLUDED	CXWS0H0PMBZ	CXWS0H0PMBT	CXWS0H0PMCU	CXWS0H0PMFB	CXWS0H0PMCG
30" 120V BUILT-IN ADVANTIUM®	CSB913P3VD1	INCLUDED	CXWS0H0PMBZ	CXWS0H0PMBT	CXWS0H0PMCU	CXWS0H0PMFB	CXWS0H0PMCG
30" 120V BUILT-IN ADVANTIUM®	CSB913P4VW2	CXWS0H0PMSS	INCLUDED	CXWS0H0PMBT	CXWS0H0PMCU	CXWS0H0PMFB	CXWS0H0PMCG
30" 240V BUILT-IN ADVANTIUM®	CSB923P2VS1	INCLUDED	CXWS0H0PMBZ	CXWS0H0PMBT	CXWS0H0PMCU	CXWS0H0PMFB	CXWS0H0PMCG
ELECTRIC RANGES							
30" SMART SLIDE-IN, FRONT-CONTROL, INDUCTION & CONVECTION RANGE WITH WARMING DRAWER	CHS900P2MS1	INCLUDED	CXFCHHKPMBZ	CXFCHHKPMBT	CXFCHHKPMCU	CXFCHHKPMFB	CXFCHHKPMCG
30" SLIDE-IN, DOUBLE OVEN, SELF-CLEAN, RADIANT, CONVECTION	CES750P2MS1	INCLUDED	CXFCEHKPMBZ	CXFCEHKPMBT	CXFCEHKPMCU	CXFCEHKPMFB	CXFCEHKPMCG
30" SLIDE-IN, DOUBLE OVEN, SELF-CLEAN, RADIANT, CONVECTION	CES750P4MW2	CXFCEHKPMSS	INCLUDED	CXFCEHKPMBT	CXFCEHKPMCU	CXFCEHKPMFB	CXFCEHKPMCG

	MODEL	BRUSHED STAINLESS KIT (SS)	BRUSHED BRONZE KIT (BZ)	BRUSHED BLACK KIT (BT)	BRUSHED COPPER KIT (CU)	FLAT BLACK KIT (FB)	BRUSHED BRASS KIT (CG)
ELECTRIC RANGES (CONT.)							
30" SLIDE-IN INDUCTION, CONVECTION, IN-OVEN CAMERA	CHS90XP2MS1	INCLUDED	CXFCHHKPMBZ	CXFCHHKPMBT	CXFCHHKPMCU	CXFCHHKPMFB	CXFCHHKPMCG
30" SLIDE-IN INDUCTION, DOUBLE OVEN, CONVECTION, IN-OVEN CAMERA	CHS950P2MS1	INCLUDED	CXFCHHKPMBZ	CXFCHHKPMBT	CXFCHHKPMCU	CXFCHHKPMFB	CXFCHHKPMCG
30" SLIDE-IN INDUCTION, DOUBLE OVEN, CONVECTION, IN-OVEN CAMERA	CHS950P4MW2	CXFCHHKPMSS	INCLUDED	CXFCHHKPMBT	CXFCHHKPMCU	CXFCHHKPMFB	CXFCHHKPMCG
30" SLIDE-IN, SELF-CLEAN, INDUCTION, CONVECTION, WARMING DRAWER	CHS900P2MS1	INCLUDED	CXFCHHKPMBZ	CXFCHHKPMBT	CXFCHHKPMCU	CXFCHHKPMFB	CXFCHHKPMCG
30" SLIDE-IN, SELF-CLEAN, INDUCTION, CONVECTION, WARMING DRAWER	CHS900P4MW2	CXFCHHKPMSS	INCLUDED	CXFCHHKPMBT	CXFCHHKPMCU	CXFCHHKPMFB	CXFCHHKPMCG
30" SLIDE-IN SELF-CLEAN, RADIANT, CONVECTION	CES700P2MS1	INCLUDED	CXFCEHKPMBZ	CXFCEHKPMBT	CXFCEHKPMCU	CXFCEHKPMFB	CXFCEHKPMCG
30" SLIDE-IN SELF-CLEAN, RADIANT, CONVECTION	CES700P3MD1	INCLUDED	CXFCEHKPMBZ	CXFCEHKPMBT	CXFCEHKPMCU	CXFCEHKPMFB	CXFCEHKPMCG
30" SLIDE-IN SELF-CLEAN, RADIANT, CONVECTION	CES700P4MW2	CXFCEHKPMSS	INCLUDED	CXFCEHKPMBT	CXFCEHKPMCU	CXFCEHKPMFB	CXFCEHKPMCG
ELECTRIC WALL OVENS							
27" DOUBLE ELECTRIC WALL OVEN	CKD70DP2NS1	INCLUDED	CXWS7H0PNBZ	CXWS7H0PNBT	CXWS7H0PNCU	CXWS7H0PNFB	CXWS7H0PNCG
27" SINGLE ELECTRIC WALL OVEN	CKS70DP2NS1	INCLUDED	CXWD7H0PNBZ	CXWD7H0PNBT	CXWD7H0PNCU	CXWD7H0PNFB	CXWD7H0PNCG
30" DOUBLE ELECTRIC FRENCH-DOOR WALL OVEN, IN-OVEN CAMERA	CTD90FP2NS1	INCLUDED	CXWDFHKPMBZ	CXWDFHKPMBT	CXWDFHKPMCU	CXWDFHKPMFB	CXWDFHKPMCG
30" DOUBLE ELECTRIC FRENCH-DOOR WALL OVEN, IN-OVEN CAMERA	CTD90FP3ND1	INCLUDED	CXWDFHKPMBZ	CXWDFHKPMBT	CXWDFHKPMCU	CXWDFHKPMFB	CXWDFHKPMCG
30" DOUBLE ELECTRIC FRENCH-DOOR WALL OVEN, IN-OVEN CAMERA	CTD90FP4NW2	CXWDFHKPMSS	INCLUDED	CXWDFHKPMBT	CXWDFHKPMCU	CXWDFHKPMFB	CXWDFHKPMCG
30" DOUBLE ELECTRIC WALL OVEN, CONVECTION	CTD70DP2NS1	INCLUDED	CXWD0H0PMBZ	CXWD0H0PMBT	CXWD0H0PMCU	CXWD0H0PMFB	CXWD0H0PMCG
30" DOUBLE ELECTRIC WALL OVEN, CONVECTION, IN-OVEN CAMERA	CTD90DP2NS1	INCLUDED	CXWD0H0PMBZ	CXWD0H0PMBT	CXWD0H0PMCU	CXWD0H0PMFB	CXWD0H0PMCG
30" DOUBLE ELECTRIC WALL OVEN, CONVECTION, IN-OVEN CAMERA	CTD90DP3ND1	INCLUDED	CXWD0H0PMBZ	CXWD0H0PMBT	CXWD0H0PMCU	CXWD0H0PMFB	CXWD0H0PMCG
30" DOUBLE ELECTRIC WALL OVEN, CONVECTION, IN-OVEN CAMERA	CTD90DP4NW2	CXWD0H0PMSS	INCLUDED	CXWD0H0PMBT	CXWD0H0PMCU	CXWD0H0PMFB	CXWD0H0PMCG
30" DOUBLE ELECTRIC WALL OVEN, CONVECTION, IN-OVEN CAMERA	CTS90DP2NS1	INCLUDED	CXWS0H0PMBZ	CXWS0H0PMBT	CXWS0H0PMCU	CXWS0H0PMFB	CXWS0H0PMCG
30" DOUBLE ELECTRIC WALL OVEN, CONVECTION, IN-OVEN CAMERA	CTS90DP3ND1	INCLUDED	CXWS0H0PMBZ	CXWS0H0PMBT	CXWS0H0PMCU	CXWS0H0PMFB	CXWS0H0PMCG
30" DOUBLE ELECTRIC WALL OVEN, CONVECTION, IN-OVEN CAMERA	CTS90DP4NW2	CXWS0H0PMSS	INCLUDED	CXWS0H0PMBT	CXWS0H0PMCU	CXWS0H0PMFB	CXWS0H0PMCG
30" ELECTRIC WALL OVEN, CONVECTION, ADVANTUM®	CTC912P2NS1	INCLUDED	CXWD0H0PMBZ	CXWD0H0PMBT	CXWD0H0PMCU	CXWD0H0PMFB	CXWD0H0PMCG
30" SINGLE ELECTRIC FRENCH-DOOR WALL OVEN	CTS90FP2NS1	INCLUDED	CXWSFH0PMBZ	CXWSFH0PMBT	CXWSFH0PMCU	CXWSFH0PMFB	CXWSFH0PMCG
30" SINGLE ELECTRIC FRENCH-DOOR WALL OVEN	CTS90FP3ND1	INCLUDED	CXWSFH0PMBZ	CXWSFH0PMBT	CXWSFH0PMCU	CXWSFH0PMFB	CXWSFH0PMCG
30" SINGLE ELECTRIC FRENCH-DOOR WALL OVEN	CTS90FP4NW2	CXWSFH0PMSS	INCLUDED	CXWSFH0PMBT	CXWSFH0PMCU	CXWSFH0PMFB	CXWSFH0PMCG
30" SINGLE ELECTRIC WALL OVEN, CONVECTION	CTS70DP2NS1	INCLUDED	CXWS0H0PMBZ	CXWS0H0PMBT	CXWS0H0PMCU	CXWS0H0PMFB	CXWS0H0PMCG
GAS COOKTOPS							
36" GAS COOKTOP	CGP95362MS1	INCLUDED	CXCG1K0PMBZ	CXCG1K0PMBT	CXCG1K0PMCU	CXCG1K0PMFB	CXCG1K0PMCG
30" GAS COOKTOP	CGP95302MS1	INCLUDED	CXCG1K0PMBZ	CXCG1K0PMBT	CXCG1K0PMCU	CXCG1K0PMFB	CXCG1K0PMCG
30" GAS COOKTOP	CGP70302NS1	INCLUDED	CXCG1K0PMBZ	CXCG1K0PMBT	CXCG1K0PMCU	CXCG1K0PMFB	CXCG1K0PMCG
30" GAS COOKTOP	CGP70362NS1	INCLUDED	CXCG1K0PMBZ	CXCG1K0PMBT	CXCG1K0PMCU	CXCG1K0PMFB	CXCG1K0PMCG
30" SLIDE-IN, SELF-CLEAN, INDUCTION, CONVECTION, WARMING DRAWER	CHS900P4MW2	CXFCHHKPMSS	INCLUDED	CXFCHHKPMBT	CXFCHHKPMCU	CXFCHHKPMFB	CXFCHHKPMCG

	MODEL	BRUSHED STAINLESS KIT (SS)	BRUSHED BRONZE KIT (BZ)	BRUSHED BLACK KIT (BT)	BRUSHED COPPER KIT (CU)	FLAT BLACK KIT (FB)	BRUSHED BRASS KIT (CG)
GAS RANGES							
30" SMART SLIDE-IN, FRONT-CONTROL, DUAL-FUEL, DOUBLE-OVEN RANGE WITH CONVECTION	C2S950P4MW2	CXFCGHKPMSS	INCLUDED	CXFCGHKPMBT	CXFCGHKPMCU	CXFCGHKPMFB	CXFCGHKPMCG
30" SLIDE-IN, DUAL-FUEL DOUBLE OVEN CONVECTION, WARMING DRAWER	C2S950P2MS1	INCLUDED	CXFCGHKPMBZ	CXFCGHKPMBT	CXFCGHKPMCU	CXFCGHKPMFB	CXFCGHKPMCG
30" SLIDE-IN SELF-CLEAN CONVECTION, WARMING DRAWER	C2S900P2MS1	INCLUDED	CXFCGHKPMBZ	CXFCGHKPMBT	CXFCGHKPMCU	CXFCGHKPMFB	CXFCGHKPMCG
30" SLIDE-IN SELF-CLEAN DOUBLE OVEN CONVECTION	CGS750P2MS1	INCLUDED	CXFCGHKPMBZ	CXFCGHKPMBT	CXFCGHKPMCU	CXFCGHKPMFB	CXFCGHKPMCG
30" SLIDE-IN SELF-CLEAN DOUBLE OVEN CONVECTION	CGS750P4MW2	CXFCGHKPTSS	INCLUDED	CXFCGHKPMBT	CXFCGHKPMCU	CXFCGHKPMFB	CXFCGHKPMCG
30" SLIDE-IN SELF-CLEAN, CONVECTION	CGS700P2MS1	INCLUDED	CXFCGHKPMBZ	CXFCGHKPMBT	CXFCGHKPMCU	CXFCGHKPMFB	CXFCGHKPMCG
30" SLIDE-IN SELF-CLEAN, CONVECTION	CGS700P3MD1	INCLUDED	CXFCGHKPMBZ	CXFCGHKPMBT	CXFCGHKPMCU	CXFCGHKPMFB	CXFCGHKPMCG
30" SLIDE-IN SELF-CLEAN, CONVECTION	CGS700P4MW2	CXFCGHKPMSS	INCLUDED	CXFCGHKPMBT	CXFCGHKPMCU	CXFCGHKPMFB	CXFCGHKPMCG
COMMERCIAL-STYLE GAS RANGETOPS							
36" RANGETOP, 6 BURNER	CGU366P2TS1	INCLUDED	CXPR6HKPTBZ	CXPR6HKPTBT	CXPR6HKPTCU	CXPR6HKPTFB	CXPR6HKPTCG
36" RANGETOP, 6 BURNER	CGU366P3TD1	INCLUDED	CXPR6HKPTBZ	CXPR6HKPTBT	CXPR6HKPTCU	CXPR6HKPTFB	CXPR6HKPTCG
36" RANGETOP, 6 BURNER	CGU366P4TW2	CXPR6HKPTSS	INCLUDED	CXPR6HKPTBT	CXPR6HKPTCU	CXPR6HKPTFB	CXPR6HKPTCG
48" RANGETOP, 6 BURNER, GRIDDLE	CGU486P2TS1	INCLUDED	CXPR8HKPMBZ	CXPR8HKPTBT	CXPR8HKPTCU	CXPR8HKPTFB	CXPR8HKPTCG
48" RANGETOP, 6 BURNER, GRIDDLE	CGU486P3TD1	INCLUDED	CXPR8HKPTBZ	CXPR8HKPTBT	CXPR8HKPTCU	CXPR8HKPTFB	CXPR8HKPTCG
48" RANGETOP, 6 BURNER, GRIDDLE	CGU486P4TW2	CXPR8HKPTSS	INCLUDED	CXPR8HKPTBT	CXPR8HKPTCU	CXPR8HKPTFB	CXPR8HKPTCG
COMMERCIAL-STYLE RANGES							
36" ALL GAS, 6 BURNER	CGY366P2TS1	INCLUDED	CXPR6HKPMBZ	CXPR6HKPTBT	CXPR6HKPTCU	CXPR6HKPTFB	CXPR6HKPTCG
36" ALL GAS, 6 BURNER	CGY366P3TD1	INCLUDED	CXPR6HKPTBZ	CXPR6HKPTBT	CXPR6HKPTCU	CXPR6HKPTFB	CXPR6HKPTCG
36" ALL GAS, 6 BURNER	CGY366P4TW2	CXPR6HKPTSS	INCLUDED	CXPR6HKPTBT	CXPR6HKPTCU	CXPR6HKPTFB	CXPR6HKPTCG
36" DUAL-FUEL, 6 BURNER	C2Y366P2TS1	INCLUDED	CXPR6HKPTBZ	CXPR6HKPTBT	CXPR6HKPTCU	CXPR6HKPTFB	CXPR6HKPTCG
36" DUAL-FUEL, 6 BURNER	C2Y366P3TD1	INCLUDED	CXPR6HKPTBZ	CXPR6HKPTBT	CXPR6HKPTCU	CXPR6HKPTFB	CXPR6HKPTCG
36" DUAL-FUEL, 6 BURNER	C2Y366P4TW2	CXPR6HKPTSS	INCLUDED	CXPR6HKPTBT	CXPR6HKPTCU	CXPR6HKPTFB	CXPR6HKPTCG
48" DUAL-FUEL, 6 BURNER, GRIDDLE	C2Y486P2TS1	INCLUDED	CXPR8HKPTBZ	CXPR8HKPTBT	CXPR8HKPTCU	CXPR8HKPTFB	CXPR8HKPTCG
48" DUAL-FUEL, 6 BURNER, GRIDDLE	C2Y486P3TD1	INCLUDED	CXPR8HKPTBZ	CXPR8HKPTBT	CXPR8HKPTCU	CXPR8HKPTFB	CXPR8HKPTCG
48" DUAL-FUEL, 6 BURNER, GRIDDLE	C2Y486P4TW2	CXPR8HKPTSS	INCLUDED	CXPR8HKPTBT	CXPR8HKPTCU	CXPR8HKPTFB	CXPR8HKPTCG

CLICK HERE for further information on specs, features, and hardware options.

C A F É

CaféAppliances.com

@cafeappliances

